

Follow these Steps to Log In & Initialize ViewLog

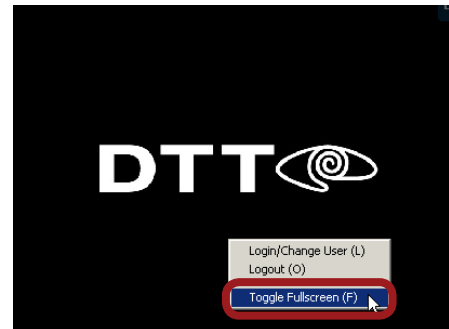
1

Right click on any camera screen, then select **Login**. If you do not know your login information, contact DTT Support.



2

Right click again and select **Toggle Fullscreen**.



3

You will now see the toolbar at the bottom right. Click the **Magnifying Glass** button.



4

Navigate to **Video/Audio Log** (or press **F10** on your keyboard).




5

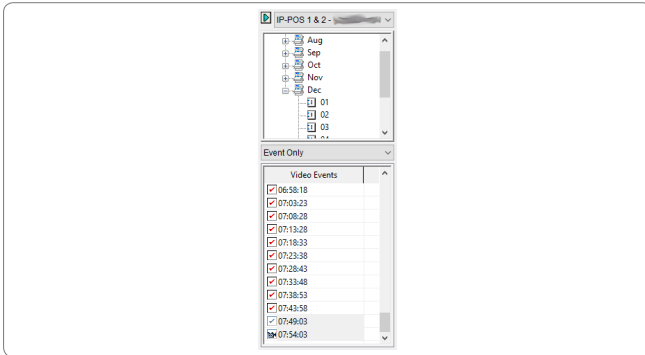
You will see the database initialize.



Follow these Steps to Navigate ViewLog

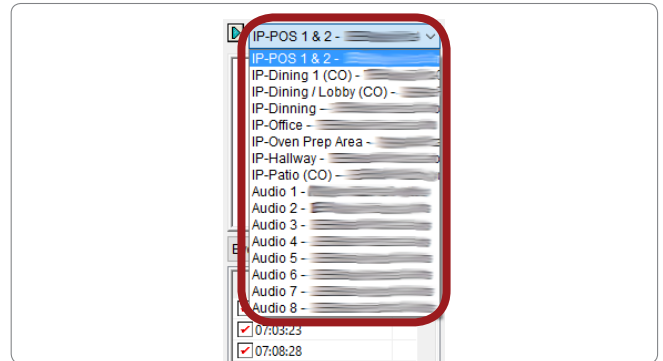
1

Once ViewLog is open, the menu will appear on the right side. If you do not see this menu, open it by clicking the red **Menu** icon on the right ().



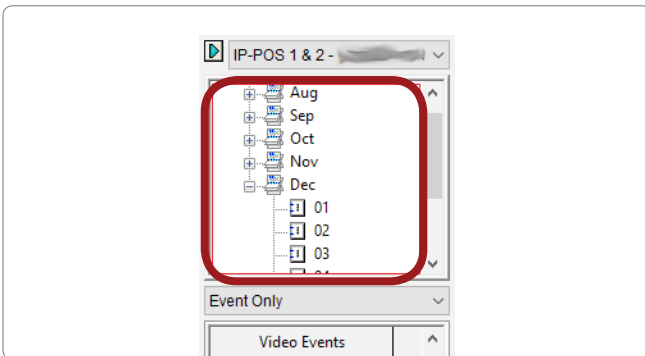
2

Select the desired camera from the dropdown list at the top.



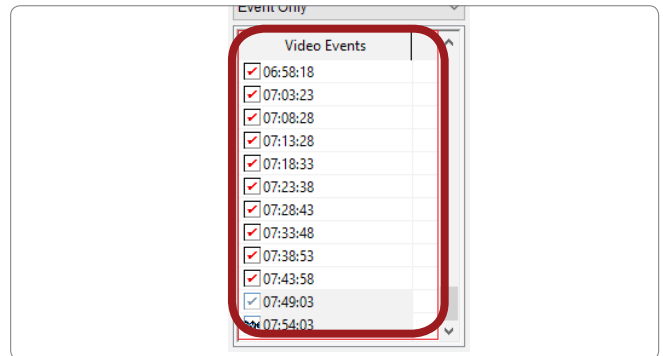
3

Select the date.



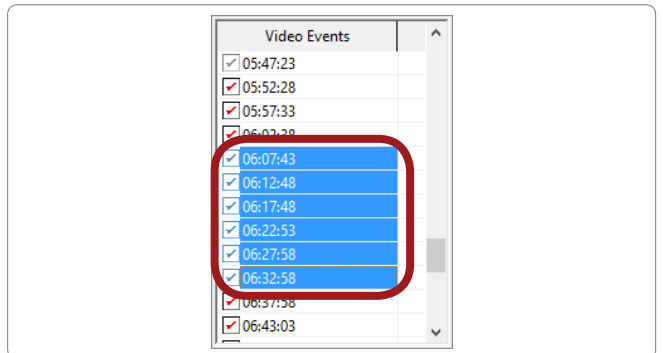
4

Select the time. Please note the selection is in 24-hour time format.



5

The footage is broken up into 5 minute sections. If you wish to view more than one section at a time, simply hold **Shift** on your keyboard after selecting your start time, then click your end time. You will see the entire time frame highlight.



6

To play the footage, click the **Play** button. The side menu will be hidden while the footage is playing, but will return once you hit **Stop**.




7

Speed up or slow down the footage by clicking the **Up/Down** arrows. Zoom in/out by clicking on the **+/-** buttons.



8

To exit ViewLog, select the **Power** button () and click **Exit**. The system will return you to the OnSite camera screen.

9

Right click and select **Toggle Fullscreen** to return the cameras to fullscreen mode.



10

Right click again and select **Login**. Input "User" as the username and leave the password field blank.

